

Fiscal Court Orders

COURT MET IN SPECIAL SESSION, PRESENT COUNTY JUDGE-EXECUTIVE DEAN WATTS AND THE FOLLOWING NAMED MAGISTRATES: KEITH METCALFE, SAM HUTCHINS, BERNARD ICE, JEFF LEAR AND JERRY HAHN.

Nelson Fiscal Court Special Meeting Agenda

August 23, 2016
9:00 a.m.

Building and Grounds Committee 8:15 a.m. - High Lift/Sutherland Building/Tippers for Garbage Trucks

Minutes - Bills - Transfers

1. Second Reading of Amended Planning and Zoning Text: 6.15E to incorporate open space and setbacks in B-5
2. Tax Moratorium Request
3. Sutherland Building Painting Proposals
4. Thal Summit Water and Sewer Bids
5. Road Department Report
6. Landfill/Solid Waste Report
 - A. Highlift Bids
 - B. Recycle Trailers
 - C.ippers for Garbage Trucks
7. Extension Presentation
8. Library Presentation
9. Jail Report
- 10.EMS Report
- 11.Recreation Department Report
12. Police Vehicle Bid
13. Special Court Meeting: August 30th, 9:00 a.m.

MINUTES APPROVED - AUG. 2 AND AUG. 10

On motion of Sam Hutchins, second of Jerry Hahn, by unanimous vote of the Court, IT IS HEREBY ORDERED to approve the minutes of the Aug 2 regular session and of the Aug 10 special session of Nelson Fiscal Court as presented.

BILLS AND TRANSFERS

On motion of Bernard Ice, second of Jerry Hahn, by unanimous vote of the Court, IT IS HEREBY ORDERED to authorize the County Treasurer to pay the following bills and to make the following transfers:

Nelson County Fiscal Court Bills for Court Approval August 23, 2016

Name	Memo	Account	Amount
01 General Fund			
3-D Graphics	Pinciroa, Kaminski	5105481 - Law Enforc Uniforms	\$ 65.00
ADP	PR processing 073116 080416	9100301 - Payroll Processing	506.39
All State Truck Sales	Ford F350	5090340 - Maintenance - Vehicle Maint	228.74
American Tire	EMA Truck 4	5135340 - EMA Vehicle maintenance	141.00
American Tire	EMA Truck 4	5135443 - EMA Vehicle Parts	32.96
Aqua Treat	Monthly water treatment	5415329 - Civic Center Maint Contracts	184.80
Bardstown Auto Wrecker	Cab light - maintenance truck	5090340 - Maintenance - Vehicle Maint	100.00
Barrie, Jennifer	Sheriff office cleaning - 0716	5105329 - Law Enforc. Bldg Main Contracts	1,250.00
Beaven Equipment	Conway, Bryan	5105340 - Law Enforc Vehicle maintenance	681.90
Bluegrass Integrated Comm	Voter cards postage-0716	5065427 - Elections Supplies	247.45
Bluegrass Uniforms Inc.	Clark	5105481 - Law Enforc Uniforms	51.00
Cutting Edge Constr	Attic window restoration	5080571 - Old Courthouse Bldg Repairs	1,071.00
Cutting Edge Constr	Window sash restoration - 1st Floor Kitchen	5086548 - Trigg Estate Preservation Funds	2,067.00

Fiscal Court Orders

Aug. 23, 2016

Book 39

SPECIAL SESSION OF NELSON FISCAL COURT

Page 54

Danville Office	Chair, calculator/add machine, paper	5001445 · CJE Office Expense	578.96
Danville Office	Savin MPC4503SPF Copier	5001725 · Office Equipment	8,357.00
Danville Office	Paper	5040445 · Treasurer Office Supplies	36.99
Danville Office	Framing inspection labels	5115427 · Codes - Technical supplies	85.90
Danville Office	Toner, folders, computer and office supply	5115445 · Codes - Office Expense	282.62
Duplicator Sales	Monthly copy charges	5205445 · Animal Control Office supplies	15.37
Economy Pest Control	Portable toilet rental August 2016	5401364 · Rented Equipment	70.00
Edelen Graphics	Decals - new truck	5090340 · Maintenance - Vehicle Maint	72.00
Feed America Ky	Feed America Program 0716	5330515 · Feed America Program	192.87
Franklin Information Systems	Annual maintenance/support fee	5115445 · Codes - Office Expense	1,151.40
Guys Building Supplies	New Haven tower	5145420 · Tower and Generator Maint	15.50
Hall, Thomas	Legal services	5310332 · Public Defender Contract	500.00
Haydon Materials	Rock	5425334 · Faigrounds Support	2,061.20
Holt Computers	Router; set up Kelly's computer	5001445 · CJE Office Expense	239.00
Holt Computers	Upgrade tablet software	5115445 · Codes - Office Expense	100.00
Interstate Security Systems	After hours service call	5105329 · Law Enforc. Bldg Main Contracts	150.00
Joe Hill's	Baseball drag maint supplies	5401427 · Recreation Maint Supplies	52.07
J L Greenwell Funeral Home	Pauper burial	5330344 · Pauper Burials	950.00
Kentucky One	Pre employment, random testing	9400547 · Employee Medical/WC Claims	115.00
Ky County Fees	HB388 County Fees	5175903 · Public Advocacy Program	5,430.00
Ky Dept of Housing	Building inspector certification-Don Kelly - notary renewal	5115551 · Codes - Dues & Certifications	50.00
Ky Notary	Kelly - notary renewal	5001445 · CJE Office Expense	10.00
Landmark Comm News	2015 audit, NCIP bids, equipment bids	9100539 · Advertising & Legal Notices	3,097.33
Landmark Comm News	2015 delinquent taxes - 2nd advertisement	9100539 · Advertising & Legal Notices	3,196.88
Landmark Sprinkler	Annual sprinkler test/inspection	5081334 · Justice Center Bldg Maint	300.00
Landmark Sprinkler	Annual sprinkler test/inspection	5415334 · Civic Center Bldg Maint	375.00
MVP Garden Center & Nursery	Mulch	5415334 · Civic Center Bldg Maint	78.00
Nelson County Coroner	Coroner transports 0716	5020308 · Coroner Autopsy & Services	1,100.00
Newcomb Oil Co	Fuel	5105429 · Law Enforc Fuel	3,318.53
Newcomb Oil Co	Fuel	5135429 · EMA Fuel	144.89
Papenfuss, Brian	Coroner training 0716	5020577 · Coroner travel	377.41
Patrons Home Center	Power wash supplies, keys	5080334 · Old Courthouse Bldg Maint	18.92
Patrons Home Center	Batteries	5080411 · Old Courthouse Custodial Supply	24.98
Patrons Home Center	Phone jack	5085334 · Sutherland Bldg Maint	5.49
Patrons Home Center	Water line repairs	5086334 · Wickland Building/Repairs	35.84
Patrons Home Center	Lag bolts, pruner, lopper, grinding wheel, bits	5090427 · Maintenance - Supplies	82.49
Patrons Home Center	Keys	5105334 · Law Enforc Building Maint	2.29
Patrons Home Center	Keys	5135336 · EMA Equipment Repairs	3.87
Patrons Home Center	Packaging supplies	5330515 · Feed America Program	140.67
Patrons Home Center	Repairs/maint - soccer, baseball	5401334 · Recreation Bldg/Grounds Maint	125.18
Patrons Home Center	Bow saw, glue, fasteners, wire brush	5401427 · Recreation Maint Supplies	49.44
Patrons Home Center	Roof and bathroom repairs	5415334 · Civic Center Bldg Maint	62.96
Patrons Home Center	July 2016 various maintenance	5105340 · Law Enforc Vehicle maintenance	1,350.99
Quick Care Express	Copy stamp	5040445 · Treasurer Office Supplies	8.79
Quill Corporation	Air freshener	5080411 · Old Courthouse Custodial Supply	5.98
Riggs Electrical	Update wiring and electrical connections	5415571 · Civic Center Building Repair	2,800.00
Rust Funeral Home	Pauper burial	5330344 · Pauper Burials	950.00
Simplex Grinnell	Fire extinguisher - new maint truck	5090427 · Maintenance - Supplies	40.00
Speedway	Fuel	5105429 · Law Enforc Fuel	291.14
Springfield Laundry	Mats, mops	5080411 · Old Courthouse Custodial Supply	54.20
Springfield Laundry	Mats, mops	5081411 · Justice Center Custodial Supply	444.80
Springfield Laundry	Mats, mops	5085411 · Sutherland Bldg Custodial Suppl	93.80
Springfield Laundry	Mats	5105411 · Law Enforc Custodial Supplies	122.40
Springfield Laundry	Mats	5415411 · Civic Center Custodial Supplies	25.00
Thyssenkrupp	Replace emergency batteries in all elevators	5081334 · Justice Center Bldg Maint	774.00
Total 01 General Fund			46,644.39
02 Road Fund			
Air Hydro	Boom mower	6105443 · Parts	142.11
All State Truck Sales	Oil distributor	6105443 · Parts	34.59
American Tire	Rear tire- boom mower	6105479 · Tires	1,214.76
A T & T	Wilkerson Road damage	6105537 · Property damage claims	2,190.12
Cintas	Custodial supplies	6105427 · Garage supplies	73.94
Cintas	Uniforms	6105481 · Uniforms	1,461.53
CMI Equipment	Ditching bucket - gradall	6105713 · Road Equipment	5,361.00
Draper, Paul	Sign bolts	6105469 · Signs & Posts	5.28
Durbin, Alan	Boot allowance	6105481 · Uniforms	75.00
Edelen Graphics	Decals - new truck	6105427 · Garage supplies	144.00
Fastenal	Woodlawn Rd Bridge	6105312 · Bridges	7.10
Hamilton Excavating	Harrison Fork, Keith Knob	6105457 · Bridge & Culvert Materials	120.00
Haydon Materials	Woodlawn Bridge Project	6105312 · Bridges	560.96
Hydraulic Specialists	Front end loader - cylinders on bucket	6105336 · Equipment repairs	2,394.93

Fiscal Court Orders

Joe Hill's	Concrete saw supplies	6105443 · Parts	139.95
Kentucky One	Random testing	9400547 · Employee Medical/WC Claims	145.00
Keystops	Fuel	6105429 · Fuel	7,464.91
Lasco	Filters	6105443 · Parts	195.39
Norman, David	Boot allowance	6105481 · Uniforms	75.00
Patrons Home Center	Office and bathroom supplies	6103411 · Cleaning and custodial supplies	53.96
Patrons Home Center	Woodlawn Bridge Project	6105312 · Bridges	37.33
Patrons Home Center	Saw blades, threaded rods, propane, paint	6105427 · Garage supplies	129.70
Patrons Home Center	Fasteners	6105443 · Parts	19.75
Patrons Home Center	Concrete	6105469 · Signs & Posts	4.99
Precision Products	Laser level w/ripod	6105475 · Tools	1,375.00
Quality Auto Glass	Repair gradall back glass	6105336 · Equipment repairs	385.00
Quality Auto Glass	Mower damage - Wire Lane	6105537 · Property damage claims	30.00
Quill Corporation	Keyboard, mouse - Kroger	6103445 · Office Supplies	34.99
Simplex Grinnell	Fire extinguisher - Steve's truck	6105427 · Garage supplies	40.00
Sublet Contractors	Dump truck modification; pins for loader bucket	6105443 · Parts	228.47
Team Boone	Hoe ram - Cecil Ridge Rd	6105457 · Bridge & Culvert Materials	2,400.00
Total Truck Parts, Inc.	Backhoe trailer	6105443 · Parts	119.53
Truck Parts & Service	Fuses, cut off wheels, garage supply	6105427 · Garage supplies	183.50
Truck Parts & Service	Road tractor, Truck 306	6105443 · Parts	181.75
Truck Parts & Service	Strobe light	6105594 · Crew Safety Equipment	116.02
Wayne Supply	Grab and grip bucket	6105443 · Parts	153.27
Total 02 Road Fund			27,298.83
03 Jail Fund			
Bob Barker	Uniforms	5101481 · Staff Uniforms	1,198.59
Clems	Food	5101425 · Food	3,272.72
Coca Cola	Inventory purchases	5101428 · Canteen Inventory	247.50
Concept Communications	Batteries	5101336 · Equipment Repairs	196.40
Dean Milk	Milk	5101425 · Food	1,290.33
Flowers Baking Co	Bread	5101425 · Food	799.79
Flowers Baking Co	Inventory	5101428 · Canteen Inventory	402.00
Gordon Foods	Dishmachine lease	5101336 · Equipment Repairs	85.00
Gordon Foods	Cleaning supplies	5101411 · Custodial Supplies	1,848.26
Gordon Foods	Kitchen supplies	5101423 · Food Prep & Serving Supplies	625.86
Gordon Foods	Food	5101425 · Food	9,542.44
Gordon Foods	Canteen purchases	5101428 · Canteen Inventory	402.45
Gordon Foods	Testing supplies	5101549 · Routine Medical	116.32
Kentucky One	Inmate medical	5101549 · Routine Medical	5,276.00
Kentucky One	Pre employment, random testing	9400547 · Employee Medical/WC Claims	275.00
Kerr Office Plus	Copier service call	5101336 · Equipment Repairs	153.35
KY Cavern Water	Water	5101445 · Office Supplies	53.97
Maxima Supply	Inventory purchases	5101428 · Canteen Inventory	4,051.55
Medica	Inmate medical	5101549 · Routine Medical	234.45
Nu Life Cartridge	Toner, chair mat	5101445 · Office Supplies	395.75
Patrons Home Center	Paint, fuses, cell repairs	5101334 · Building Maint Supplies	707.79
Patrons Home Center	Drain opener	5101411 · Custodial Supplies	32.48
Redwood Toxicology	Testing supplies	5101550 · Pretrial Testing Supplies	472.00
Roby's Country Gardens	Food	5101425 · Food	544.50
RWH Computer Networking	Printer (booking counter), service call	5101445 · Office Supplies	497.98
Securus	Phone cards	5101428 · Canteen Inventory	1,935.80
United Mechanical Inc	HVAC/Smoke Evac Project - final billing	5101741 · Jail Building	44,396.00
Total 03 Jail Fund			79,054.28
04 LGEA Fund			
Haydon Materials	Various county roads	6105409 · Rock	1,827.45
Total 04 LGEA Fund			1,827.45
09 Ambulance Fund			
Absolute Overhead Door	Station II	5140334 · Building maintenance	715.00
American Tire	Sq 31,33,36,602	5140340 · Vehicle Maintenance & Repairs	1,710.18
American Tire	Sq 31	5140429 · Fuel	72.00
American Tire	Sq 33,602	5140439 · Oil, lubes	109.48
American Tire	Sq 31, 33, 41	5140443 · Vehicle Parts	2,038.91
American Tire	Sq 33, 36, 602	5140479 · Tires	981.13
Beaven Equipment	Sq 31, 33, 39, 41	5140340 · Vehicle Maintenance & Repairs	769.50
Beaven Equipment	Sq 31, 33, 39, 41	5140443 · Vehicle Parts	3,676.12
Becky's Vac Shop	Vacuum bags	5140411 · Custodial supplies	75.68
Bound Tree Medical	Medical supplies	5140550 · Medical supplies & Materials	711.51
Fleet Matics	GPS Service Agreement	5140336 · Equipment Maintenance & Repairs	1,497.30
Galls	Nameplates, uniforms	5140481 · Staff Uniforms	785.30
Kentucky One	Random testing	9400547 · Employee Medical/WC Claims	70.00
Ky Home Electronics	Radio maint supplies	5140339 · Radio Maintenance & Repairs	25.96

Fiscal Court Orders

Aug. 23, 2016

Book 39
Page 56

SPECIAL SESSION OF NELSON FISCAL COURT

Ky Home Electronics	3g cable	5140445 · Office Expense	37.99
L&W Emergency Equip	Radio	5140339 · Radio Maintenance & Repairs	450.00
Newcomb Oil Co	Fuel	5140429 · Fuel	5,103.20
Patrons Home Center	Cable line install - Station IV. keys	5140334 · Building maintenance	33.71
Pat's Alterations	Uniform alterations	5140481 · Staff Uniforms	10.00
QuatMed Inc	Medical supplies	5140550 · Medical supplies & Materials	420.85
Sam's Club	Printer ink	5140445 · Office Expense	106.71
Sam's Club	Station II	5140446 · Housing expenses	346.84
Shred-it USA	File destruction service	5140445 · Office Expense	71.76
Stryker Medical	Cot maint	5140336 · Equipment Maintenance & Repairs	780.00
Sure Flame Propane	Station II	5140578 · Utilities	153.06
TESS Company	Oxygen	5140550 · Medical supplies & Materials	147.30
Total 09 Ambulance Fund			<u>20,899.49</u>
Subtotal - General Fund Bills			<u>\$ 175,724.44</u>

13 Solid Waste Fund			
American Tire	Shop tires	5215479 · Tires	\$ 3,428.00
Cintas First Aid & Safety	First aid supplies	5215594 · Crew Safety Equipment	168.96
Fisher Auto	Oil, grease	5215427 · Garage supplies	63.07
FleetPride	Filters, solenoid	5215443 · Parts	217.10
Kentucky One	Random testing	9400547 · Employee Medical/WC Claims	75.00
Keystops	Fuel	5215429 · Fuel & Lubricants	7,811.13
Lasco	Truck 410	5215443 · Parts	1,205.60
Municipal Equip	Truck 412	5215443 · Parts	309.95
Quill Corporation	Labels	5215445 · Office Supplies	137.98
Raben Tire Co	Tires, repairs	5215479 · Tires	533.68
Salt River	Garbage billing services	5215320 · Collection Contracts	10,522.80
Springfield Laundry	Uniforms	5215481 · Employee uniforms	384.80
Tatum Auto Supply	Siphon, A/C flush	5215427 · Garage supplies	65.47
Truck Parts & Service	Tire patching	5215443 · Parts	32.85
Total 13 Solid Waste Fund			<u>24,956.39</u>

15 Landfill Fund			
American Tire	2010 Ford F350	5210479 · Tires	302.66
Cintas First Aid & Safety	First aid supplies	5210594 · Crew Safety Equipment	168.96
Dadsman Equip	963 Highlift	5210443 · Parts	130.00
Duplicator Sales	Monthly copy charges	5210445 · Office Expense	177.06
Fisher Auto	Permatex	5210427 · Main supplies	37.90
FleetPride	Starter fluid, brake cleaner	5210427 · Main supplies	69.96
FleetPride	Truck 401	5210443 · Parts	276.92
Haydon Materials	Rock	5210571 · Property Maintenance	2,266.78
Interstate Security Systems	Alarm battery	5210334 · Building Maintenance	32.00
J & G Equip	Weed eater supplies	5210427 · Main supplies	70.95
Kentucky One	Random testing	9400547 · Employee Medical/WC Claims	70.00
Keystops	Fuel	5210429 · Fuel & Lubricants	2,918.97
McCoy & McCoy	Monitoring	5210324 · Environmental Monitoring	1,710.25
Patrons Home Center	Garage supplies	5210427 · Main supplies	12.04
Patrons Home Center	Trucks 417, 418	5210443 · Parts	16.99
Precision Products	Laser level w/tripod	5210475 · Tools	1,375.00
Quality Auto Glass	Highlift door	5210443 · Parts	80.00
Quill Corporation	Floor cleaner	5210411 · Custodial supplies	35.98
Quill Corporation	External hard drives	5210445 · Office Expense	189.98
SpringCo Janitorial	Towels	5210411 · Custodial supplies	59.72
Springfield Laundry	Cleaning supplies	5210427 · Main supplies	115.00
Springfield Laundry	Uniforms	5210481 · Uniforms	286.46
Total 15 Landfill Fund			<u>10,403.58</u>
23 Occupational Tax Fund			
Danville Office	Envelopes, folders, paper	5047445 · OLF Office supplies	361.74
Shred-it USA	File destruction service	5047445 · OLF Office supplies	65.58
Zuercher Technologies	Law Enforcement Data Software	5105705 · Law Enforcement Software	24,173.40
Total 23 Occupational Tax Fund			<u>24,600.72</u>
97 PIC			
Springfield Laundry	Mats	5082411 · SOB Custodial Supplies	32.80
Total 97 PIC			<u>32.80</u>
Subtotal - PIC Fund Bills			<u>\$ 59,993.49</u>
Total Bills Scheduled for Payment			<u>\$ 235,717.93</u>

Fiscal Court Orders

Nelson County Fiscal Court
Additional Bills for Court Approval
August 23, 2016

Name	Memo	Account	Amount
01 General Fund			
Holt Computers	Setup email for Kelly	5001445 · CJE Office Expense	\$ 60.00
Simplex Grinnell	Fire extinguisher inspections	5080329 · Old Courthouse Main Contracts	144.85
Simplex Grinnell	Fire extinguisher inspections	5305329 · Sr Citizen Bldg Main Contracts	36.00
Total 01 General Fund			240.85
02 Road Fund			
Cintas First Aid & Safety	First aid supplies	6105594 · Crew Safety Equipment	104.40
Contech Constr Products	Eggen Rd, Walter Hall, stock	6105457 · Bridge & Culvert Materials	9,408.37
Trailer Parts and Service	Flatbed for new dually	6105723 · Road Vehicles	2,100.00
Total 02 Road Fund			11,612.77
03 Jail Fund			
Simplex Grinnell	Fire extinguisher inspections	5101329 · Building Main Contracts	335.80
Total 03 Jail Fund			335.80
			\$ 12,189.42

NELSON COUNTY FISCAL COURT
PrePaid Bills and Upcoming Transfers for Court Approval
August 23, 2016

Fund/Vendor	Description	Account	Amount
General Fund			
Nelson County Jail	Transfers from General Fund - July 2016	4909 03 · Transfers to Jail	\$ 52,380.10
Road Fund			
Lawson Products	Garage supplies	6105427 · Garage supplies	144.42
Less Discounts			(1.45)
SRM Concrete	Keith Knob	6105457 · Bridge and Culvert Materials	600.00
Less Discounts			(10.00)
EMS Fund			
Mohawk Medical	Medicine and supplies	5140550 · Medical supplies & Materials	628.14
Less Discount			(6.28)
Solid Waste Fund			
Lawson Products	Garage supplies	5215427 · Garage supplies	261.90
Less Discount			(2.61)
TOTAL PAID BILLS			\$ 53,994.22

*** ***** ***
ORDINANCE AMENDING ZONING REGULATIONS - DISTRICT B-5 (SECOND READING)

NELSON COUNTY ORDINANCE
**AN ORDINANCE AMENDING AND ADOPTING AS AMENDED SECTION 6.15 (E)
RETAIL COMPLEX DISTRICT (B-5) OF ZONING REGULATIONS**

WHEREAS, on June 28, 2016, the Joint City-County Planning Commission of Nelson County, Kentucky held a special meeting and public hearing under the provisions of KRS Chapter 100, and after careful consideration on the same date, the Commission voted to approve and recommend for approval to the Fiscal Court of Nelson County the amendment of certain provisions of the Nelson County Zoning Regulations;

Fiscal Court Orders

WHEREAS, the Court held a first reading on August 2, 2016 and after due advertisement held a second reading and adoption on August 23, 2016, and after due consideration,

UPON MOTION OF Jeff Lear, SECONDED BY Sam Hutchins, AND A VOTE BEING HAD AND THE COUNTY JUDGE ANNOUNCING THAT THE MOTION CARRIED,

NOW THEREFORE BE IT ORDAINED BY THE FISCAL COURT OF NELSON COUNTY, COMMONWEALTH OF KENTUCKY:

SECTION I: That Section 6.15 (E) Retail Complex District (B-5) of the Nelson County

Zoning Regulations are hereby amended as more particularly set forth in the attached Zoning Regulations Text Amendment Summaries which detailed below;

E. Dimension and Area Requirements

Standard	Requirement
Height (maximum)	50 feet
Complex Area (minimum)	Note: There is no minimum lot size required for an overall development. It is subject to the lot size requirements herein. A B-5 complex may be constituted, under this zone, of 1 or more individual lots meeting these size requirements.
Complex Lot Width (minimum)	50 feet
Individual Lot Area (minimum) Served by sanitary sewer Not served by sanitary sewer	5,000 square feet 43,560 square feet
Individual Lot Width (minimum)	None
Open Space (minimum)	20 percent Note: To be shown on the development plan required in Section A. above and approved for location by the Planning Commission.
Front Yard Setback (minimum)	50 feet Note: All setbacks are from outer boundaries of the entire development.
Side Yard Setback (minimum)	25 feet The layout and setbacks applied to the interior of the project or development are subject to Planning Commission approval as shown on the plan required under Section A. above.
Rear Yard Setback (minimum)	25 feet

SECTION II: This Ordinance becomes effective immediately upon passage by the Fiscal Court of Nelson County.

SECTION III: This Ordinance shall be published in the Kentucky Standard newspaper by title and summary within 30 days after adoption.

SECTION IV: This Order or parts of Orders in conflict herewith are repealed to the extent of such conflict.

Adopted this 23 day of August, 2016, by 5 ayes and 0 nays.

ATTEST:


Nelson County Court Clerk

NELSON FISCAL COURT


County Judge/Executive

Approved on motion of Jeff Lear, second of Sam Hutchins, and by affirmative vote of all Court members.

Fiscal Court Orders

Aug. 23, 2016
SPECIAL SESSION OF NELSON FISCAL COURT

Book 39
Page 59

TAX MORATORIUM - S R S CO

On motion of Sam Hutchins, second of Jerry Hahn, by affirmative vote of Court members Hutchins, Hahn, Metcalfe, Lear and Ice, IT IS HEREBY ORDERED to approve the application for tax assessment moratorium by S R S Co:

NELSON COUNTY - KENTUCKY

APPLICATION FOR ASSESSMENT/REASSESSMENT MORATORIUM CERTIFICATE

Please read The "Explanation of Assessment/Reassessment Moratorium Certificate" prior to completing this application - attached.

Name: S R S CO		Phone: (502) 348-5967	
Mailing Address: 207 N THIRD STREET		State: KY Zip: 40004	
City: BARDSTOWN			

Type: <input checked="" type="checkbox"/> Residential <input type="checkbox"/> Commercial	Project Completion Date: 12-15 MONTHS
Location/Address: 1207 NORTH THIRD ST	
Term: 40 YEARS	

General Description of Property:

COMMERCIAL BUILDING USED AS BEVERAGE DISTRIBUTION COMPANY. SMITH BROTHERS DISTRIBUTING COMPANY LEASES THE FACILITY FROM S R S CO.

General Description of Proposed Use:

BUILDING ADDITION WILL BE USED TO EXPAND AND CONTINUE OPERATIONS OF SMITH BROTHERS DISTRIBUTING CO.

If commercial, list the fixed building equipment and a statement of the economic advantages expected from the moratorium and construction employment:

BUILDING CONTAINS LOADING DOCKS AND FIXTURES. THE BUILDING ADDITION WILL HELP SERVICE EXPANDING BUSINESS AND THE COMPANY WILL ADD ADDITIONAL EMPLOYEES.

Applicant's estimated Total Costs of rehabilitation or repair	\$ 750,000	Applicant's estimate of fair cash value of property as of the date of this application	\$ 660,000
---	------------	--	------------

AFFIDAVIT AND OATH

I, FRANCIS X. SMITH, SR. hereby swear (affirm) under penalty of perjury that I (we) am (are) the owner(s) of the property for which this assessment moratorium is sought and that all information contained in this application is true and correct.

Francis X. Smith President Signature of Applicant(s) Date: July 27, 2016

OFFICIAL USE ONLY DO NOT WRITE BELOW THIS LINE

PROPERTY VALUATION ADMINISTRATOR

Property Valuation Administrator's Appraisal	\$ 660,000
This Application is	<input checked="" type="checkbox"/> APPROVED <input type="checkbox"/> DISAPPROVED

Barbara Jackson Signature of Property Valuation Administrator Date: 8/16/16

SUTHERLAND BUILDING ROOF PAINTING TO ADAMS

On motion of Sam Hutchins, second of Jerry Hahn, by unanimous vote of the Court, IT IS HEREBY ORDERED to award bid for painting of exterior portions and roof of the Sutherland Building to Adams Painting Company - \$9,400.00. Previous contract, awarded about one year ago, fell through. Bids are as follows:

Fiscal Court Orders

Aug. 23, 2016
SPECIAL SESSION OF NELSON FISCAL COURT

Book 39
Page 61

Explaining the difference between Contract 1 Total and Alternate Total, Spalding explained that the City of Bardstown has agreed to pay that difference for a section of 16" line that they requested to be included as part of the project rather than the 12" line contained in the bid. On motion of Jeff Lear, second of Bernard Ice, by unanimous vote of the Court, IT IS HEREBY ORDERED to approve the bid by Cleary Construction Inc. for the Thai Summit water/sewer extension - \$312,369.90. Proceeds from sale of the property will be used to cover this expense. Gas line extension worked out so that it will not cost any additional money and will be coordinated with the water/sewer extension project--LG&E.

NELSON COUNTY EXTENSION BOARD BUDGET

Ron Bowman, Nelson County Extension Service, presented that Board's FY 2016-17 budget to Nelson Fiscal Court, noting that the Board has voted this year to take the 4% compensating rate increase, the first time in thirty-two years that an increase has been taken, but now necessary to meet increases that have occurred:



July 1, 2016 - June 30, 2017

Fiscal Year:

Fund Name:

Nelson County Extension District Board

SPGE Budget Summary - Non Enterprise	Current Year Estimates (Due July 15)		Budget As Amended (As of June 30)	Year-End Actual (Due September 1)
	July 15	July 15	(As of June 30)	September 1
Revenues				
Taxes (all categories)	\$319,608	\$319,608	\$319,608	\$0
Permits and Licenses	\$0	\$0	\$0	\$0
Payments in Lieu of Taxes	\$0	\$0	\$0	\$0
Intergovernmental Revenues	\$0	\$0	\$0	\$0
Charges for Services	\$0	\$0	\$0	\$0
Other Revenues	\$0	\$0	\$0	\$0
Interest Earned	\$0	\$0	\$0	\$0
Total Revenues	\$319,608	\$319,608	\$319,608	\$0
Receipts and cash				
Carryover from Prior Fiscal Year	\$233,000	\$233,000	\$233,000	\$0
Bonded Debt, Public Corporation & G.O.	\$0	\$0	\$0	\$0
Transfers to Other Funds	\$0	\$0	\$0	\$0
Transfers from Other Funds	\$0	\$0	\$0	\$0
Borrowed Money (all short term/single year)	\$0	\$0	\$0	\$0
Governmental Leasing Act	\$0	\$0	\$0	\$0
All Other Borrowed Money	\$0	\$0	\$0	\$0
Total Receipts and Cash	\$233,000	\$233,000	\$233,000	\$0
Total Available (sum of Total Receipts, Cash & Total Revenues)	\$552,608	\$552,608	\$552,608	\$0
Appropriations				
Personnel	\$286,961	\$286,961	\$286,961	\$0
Operations	\$70,733	\$70,733	\$70,733	\$0
Administration & Reserves	\$192,600	\$192,600	\$192,600	\$0
Capital Outlay	\$2,314	\$2,314	\$2,314	\$0
Debt Service	\$0	\$0	\$0	\$0
Total Appropriations	\$552,608	\$552,608	\$552,608	\$0

Fiscal Court Orders

LIBRARY BOARD BUDGET

Nelson County Library Director Sharon Shanks presented the Nelson County Public Library's 2016-17 budget, as well as tax rates for FY 2016-17:

NELSON COUNTY PUBLIC LIBRARY BUDGET 2016-2017

Ordinary Income/Expense	Budget 2016-2017	Budget 2016-2017
09 State Support	24,000.00	21,999.00
10 Other Grants (LSTA)	2,000.00	0
13 Library Tax		
13a Property Tax	2,375,000.00	
13b Motor Vehicle	35,000.00	
13c Delinquent Tax	400.00	
13d Telecommunications Tax	7,500.00	
Total 13 Library Tax	2,417,900.00	2,495,000.00
15 KOLA Construction Grant	64,000.00	64,000.00
19 Copier Fees	11,000.00	11,000.00
20 Fax	3,000.00	2,700.00
21 Fines	3,500.00	2,200.00
22 Interest	40.00	60.00
23 Postage Reimbursement	700.00	1,000.00
24 Donations	9,000.00	25,000.00
25 Reimbursements	1,000.00	800.00
25a Staff Purchases	300.00	500.00
26 Misc. Deposits	3,000.00	2,000.00
26a Book Sale		
Total Income	2,582,440.00	2,848,259.00

Expense	Budget 2016-2017
33 Books (local)	186,280.00
34 Periodicals	3,000.00
35 Video	25,000.00
36 Electronic Library Materials	30,000.00
37 Audio Books	7,000.00
38 Other Audio/Video	8,500.00
39 Processing Supplies	997,860.00
45 Salaries	61,980.00
46 FICA	15,500.00
47 Medicare	170,400.00
48 Retirement	200,000.00
49 Health Insurance	8,000.00
50 workers Comp.	8,200.00
51 Unemployment Ins.	2,500.00
52 Life Ins.	45,000.00
55 Building Repair	45,000.00
57 Cleaning Service	40,000.00

58 Service Contract	50,000.00	60,000.00
60 Debt Retirement Series 2016		
60a Bond Series 2016 Principal	165,000.00	160,037.50
60b Bond Series 2016 Interest	84,970.00	30,075.00
Total 60 Debt Retirement Series 2016	249,970.00	190,112.50
60(2) Debt Retirement Ser 2011		
60(2)a Bond Series 2011 Princ	80,000.00	85,000.00
60(2)b Bond Series 2011 Int	33,038.00	31,593.75
Total 60(2) Debt Retirement Ser 2011	113,038.00	116,593.75
61 Telephone	22,000.00	20,000.00
62 Utilities	75,000.00	81,330.00
63 Insurance		
63a Building	14,000.00	14,700.00
63b Trust and Directors	4,000.00	4,000.00
63c Van	800.00	1,300.00
Total 63 Insurance	18,800.00	20,000.00
64 Office Supplies	17,000.00	14,500.00
65 Programming	24,000.00	30,000.00
65b Child. Programming	12,000.00	20,000.00
65 Legal Fees	2,000.00	2,000.00
67 Audit Fee	5,500.00	6,000.00
68 Accounting Fees	9,000.00	10,200.00
69 Postage	5,000.00	5,000.00
70 Professional R & R	5,000.00	25,000.00
71 Equipment R & R	15,000.00	10,000.00
72 Furniture R & R	15,000.00	17,000.00
74 Misc. General Operating	4,000.00	1,500.00
76 Bookmobile (Operating)	6,500.00	6,500.00
77 Bookmobile (Repair)	4,000.00	4,000.00
78 Bookmobile (Insurance)	1,500.00	1,500.00
79 Extended Service Vehicle Purchase		28,753.00
81 Hardware-Operating	15,000.00	20,000.00
82 Software-Operating	4,500.00	5,000.00
83 Maintenance	2,000.00	3,000.00
84 Fees & Usage	43,140.00	60,000.00
87 Tuition, Reg. & Training	15,000.00	17,273.00
88 Travel Reimbursement	872.00	900.00
89 Dues	1,600.00	1,200.00
Net Ordinary Income	2,562,440.00	2,848,259.00
Net Expense	2,562,440.00	2,848,259.00
Net Income	0.00	0.00

DEPARTMENT REPORTS

**ROAD DEPARTMENT

Jim Lemieux reported on progress of bushhog rounds throughout districts thus far, on full-time boom mowing, on completion of Woodlawn Rd. bridge, and on road work and culvert work on various roads throughout the county.

**LANDFILL/SOLID WASTE HIGH LIFT BIDS:

County of Nelson
Track Crawlers/Loader

OFFICIAL BID FORM

- 1) Base Bid for New Track Loader
(with trade in of 963D CAT Loader)
(without trade in of 963D CAT Loader) \$ 244,199.00 *see quote #28912-4*
- 2) Options - #1 Waste protection
(see item 7 in specs) \$ Included
- 3) Guaranteed 5-year buy back \$ 89,000.00
- 4) Warranty New Full Machine & 3 year or 3,000 hour Power-Trawl
Additional Coverage 5 year @ 5,000 hours \$ 3,600.00
TRAIN
- 5) Total Dollar Value of Current, In House Parts Inventory
and Location of Said Inventory: 10 million + Louisville
60 million - Company
- 6) Nearest Manufacturer's Parts Warehouse: Chytton, OH

Fiscal Court Orders

Aug. 23, 2016
SPECIAL SESSION OF NELSON FISCAL COURT

Book 39
Page 63

- 7) Number of Field Service Vehicles: 23
Home Location: Louisville & ELIZABETH TOWN
Major Service Call Response Time: Same Day if Call Received Before 12:00pm
- 8) Delivery time: 14-15 weeks from date of order

The undersigned, authorized representative of Whayne Supply Company hereby submits the above bid to the Nelson County Fiscal Court this 5th day of August, 2016.


Bidder's Authorized Representative

NOTE: All exceptions to the specifications must be noted by the bidder. Nelson County reserves the right to accept or reject all bids and waive formalities.

*MACHINE - CAT 963K PER ATTACHED QUOTE # 26912-4
MEETS ALL WRITTEN SPECS.*

** See Quote for CAT FUEL GUARANTEE **

County of Nelson
Track Crawler/Loader

OFFICIAL BID FORM

- 1) Base Bid for New Track Loader
(with trade in of 963D CAT Loader) \$223,306
(without trade in of 963D CAT Loader) \$259,431
- 2) Options - #1 Waste protection
(see item 7 in specs) \$5,258
- 3) Guaranteed 5-year buy back \$25,000
- 4) Warranty: 12 mo. Comprehensive & 36 mo./6000hr Powertrain + Hyd. included
Additional Coverage: 48 month/8000 hr \$5,568
- 5) Total Dollar Value of Current, In House Parts Inventory
and Location of Said Inventory: \$478,000 parts inventory located at 13090
Aiken Road in Louisville, KY
- 6) Nearest Manufacturer's Parts Warehouse: Moline IL
- 7) Number of Field Service Vehicles: Three
Home Location: Louisville
Major Service Call Response Time: Less than 4 hours
- 8) Delivery time: 60-90 days

The undersigned, authorized representative of Meade Equipment hereby submits the above bid to the Nelson County Fiscal Court this 29th day of July, 2016.


Bidder's Authorized Representative

NOTE: All exceptions to the specifications must be noted by the bidder. Nelson County reserves the right to accept or reject all bids and waive formalities.

Equipment Committee reviewed bids prior to Fiscal Court, recommending purchase of the Caterpillar due to trade-in, buy-back, service, and track record that has been experienced with this brand. On motion of Sam Hutchins, second of Jerry Hahn, by unanimous vote of the Court, IT IS HEREBY ORDERED to approve purchase of the Caterpillar track loader as bid - including trade-in of the 963D Cat loader.

Fiscal Court Orders

Aug. 23, 2016
SPECIAL SESSION OF NELSON FISCAL COURT

Book 39
Page 64

RECYCLING TRAILER - John Greenwell told Court members that budget included \$15,000 for a recycling trailer; old trailer is in very bad condition and is single-axle. Need is for a larger, tandem-axle unit. Following quote has been received:

NATIONAL RECYCLING TRAILERS

LAWLESS WELDING INC. DBA NATIONAL RECYCLING TRAILERS

938 W. STEVE WARNER DR.
RUSSELL SPRINGS, KY 42842
Phone Number 270-868-5416
Fax Number 270-868-5568
Web Address: lawlesswelding.com
Email: gene@lawlesswelding.com

QUOTE

TO: NELSON COUNTY LANDFILL
JOHN GREENWELL

FROM: Gene Smith
DATE: JULY 29, 2016

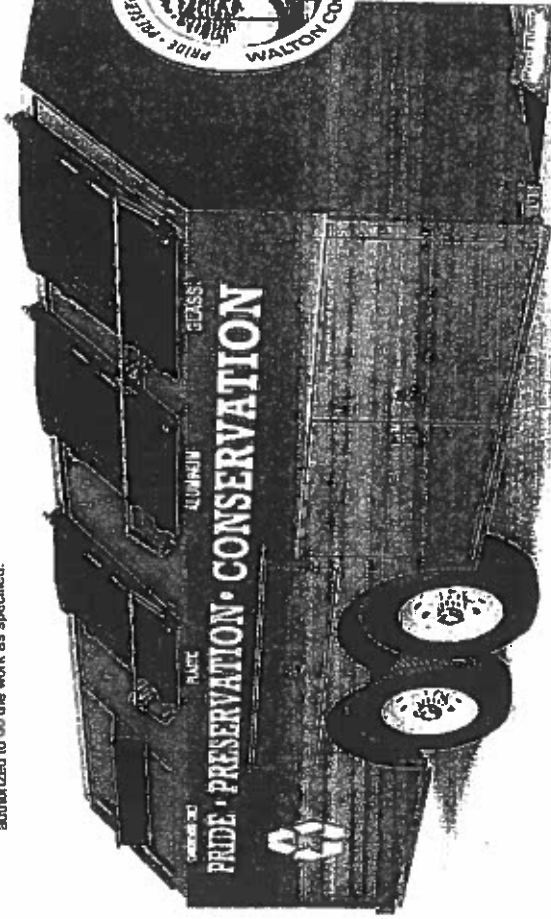
National Recycling Trailers of Russell Springs, KY is pleased to present to you a quote for the NRT-22 recycling trailer as per your request.

- Providing 22 cubic yards of usable space.
- Four gravity flow compartments.
- Tire size LT235/85/R16 with 8 lug wheel.
- Electric brakes with "Engager" Brake-away box kit.
- Paint used on trailers is Epoxy primer (2 coats), and Urethane paint white or green. Other colors are available.
- Trailer will be sandblasted
- Heavy duty poly doors have steel easy flip handle locks.
- Heavy duty fire truck grade steel door latches are keyed alike.
- All LED lights are mounted in the center of the trailer, not in the bumpers for safety and visibility.
- Rear bumper jacks are provided for safety and stability.
- Bolt on 8000# heavy duty trailer jack.
- Tandem 6000# torsion axles.
- Decals not included.

**\$10,650.00 PER UNIT DELIVERED
PLUS KY SALES TAX IF APPLICABLE**

QUOTE PREPARED BY: *Sam Hutchins*

ACCEPTANCE OF QUOTE--The prices, specifications and Conditions are satisfactory and are hereby accepted. You are authorized to do the work as specified.



Pro-Trainer designs each trailer for your recycling program.

Pro-Gravity Series Recycling Trailer is Perfect for:

- Residential Collection
- Military Bases
- Parks & Campgrounds
- Corporate Campuses
- College Campuses
- Multi-Unit Apartments
- Drop & Collection Sites

From: Kyle Virnig [mailto:kylev@protrainer.com]

Sent: Thursday, July 28, 2016 4:56 PM

To: 'John Greenwell'

Subject: RE: Recycling Trailer

Hi John,

It would have 1 internal swing divider to make two compartments.

Thanks,

On motion of Jerry Hahn,
second of Sam Hutchins, by
affirmative vote of all Court
members, IT IS HEREBY ORDERED
to approve purchase of recycling
trailer as quoted by National
Recycling Trailers of Russell
Springs, KY - \$10,650.

Fiscal Court Orders

Aug. 23, 2016
SPECIAL SESSION OF NELSON FISCAL COURT

Book 39
Page 65

TIPPERS FOR GARBAGE TRUCKS

To: Judge Dean Watts
From: John Greenwell
Date: 8/10/16
Re: Nelson County Landfill, Tipper for Garbage Packer

Over the years we have had several back injuries due to picking up large cans and continuous lifting. This has put a strain on the other workers due to missed work days as well as it could raise our EMR and raise our insurance rates. My long term goal would be to get tippers on all Garbage trucks but I would like to start with the truck that has the most subdivisions with the toughest route. If you have any questions, please let me know.

Thanks,

John C. Greenwell, PE, PLS
Nelson County Landfill Manager/ Engineer

Purchase Order

To:		DATE: 2/10/14			
Municipal Equipment 6305 Old Shepherdsville Road Louisville, KY 40228 Phone: 800-248-7590 Fax: 502-962-6499		Invoice to: Nelson County Landfill 1025 Airport Road Bardstown, KY 40004 Ph: 502-348-1876 J. GREENWELL			
ITEM #	ITEM DESCRIPTION	QUANTITY	UNIT	UNIT PRICE	TOTALS
1	Perkins D6080C Rotary Actuated Tuck-Away Cart Tipper	1.00	Each	\$3,472.00	\$3,472.00
2	Hydraulic Tap-in kit with controls	1.00	Each	\$1,800.00	\$1,800.00
3	Extend load sill and container attachment	1.00	Each	\$1,820.00	\$1,820.00
4	Center Notch Extended load sill	included			
5	Install Tipper & Controls	1.00	Each	\$1,363.00	\$1,363.00
COMMENTS		SUB-TOTAL			\$8,455.00
Garbage Truck 411		TOTAL COST			\$8,455.00
Purchase Order Issued By: <u>Dean Watts</u> Date: _____ NELSON COUNTY JUDGE EXECUTIVE					

Judge Watts told Court members that he is recommending purchase of two tippers for the two newest garbage trucks; intent for future is to fit any new trucks with tippers to handle the heavier containers that are being put out currently. On motion of Sam Hutchins, second of Jerry Hahn, by unanimous vote of the Court, IT IS HEREBY ORDERED to approve purchase of two tippers at \$8,455.00 each, retrofitting the two newest trucks to accommodate the tippers.

Fiscal Court Orders

Aug. 23, 2016

Book 39
Page 66

SPECIAL SESSION OF NELSON FISCAL COURT

****JAIL**

Regular report presented by Jailer Dorcas Figg:

NELSON COUNTY JAIL		NELSON COUNTY JAIL				
Total	Hardin Co	HIP	State	W-End	OUT TO CT	In House
142	2	1	30	6	2	131
145	2	1	30	6	2	134
134	1	1	36	7	2	123
134	1	1	34	5	2	125
136	1	1	34	5	2	127
137	3	1	34	5	2	126
138	3	0	34	6	2	125
130	3	0	33	8	2	117
132	3	0	34	7	2	120
134	3	0	35	8	4	119
142	3	0	35	6	4	129
138	3	0	35	6	4	125
135	3	0	35	6	4	122
137	3	0	35	6	4	124
141	3	1	37	6	4	127
145	3	1	34	6	4	131
142	3	1	34	6	3	129
134	3	1	34	5	3	122
132	3	1	32	4	3	121
133	3	1	32	6	3	120
130	3	1	32	6	3	117

NELSON COUNTY JAIL		NELSON COUNTY JAIL	
CI	Average	CD	Average
883	27	9	
280		113	
3513		150	
4656			

NEW ARREST AND RELEASES FAJULY 2016	
ARRIVALS	RELEASES
MALE 162	MALE 162
FEMALE 54	FEMALE 60
TOTAL 216	TOTAL 222

JULY DAILY AVERAGE	
Mandays	Average
883	27
280	9
3513	113
4656	150

NUMBER OF DAYS INMATES SERVED FAJULY 2016	
DAYS	INMATES
1	65
2	46
3	22
4	21
5	12
6	14
7	14
8	8
9	5
10	7
11	10
12	10
13	2
14	10
15	15
16	
17	
18	
19	
20	
21	
22	
23	
24	
25	
26	
27	
28	
29	
30	
31	

C/S	
STATE SENTENCED	0
CI	22
CD	10
CIRCUIT COURT SERVING WEEKE	0
COMMUNITY SERVICE	6
WORK RELEASE	5
CIRCUIT SENTENCE TO JAIL	0
DRUG COURT	3
CIRCUIT WAITING COURT	67
TOTAL OF 88 HAS NOT BEEN SENTENCED	

JULY DAILY AVERAGE

CI	883
CD	280
NELSON	3513
TOTAL	4656

NEW ARREST AND RELEASES FAJULY 2016

ARRIVALS	MALE 162	FEMALE 54
RELEASES	MALE 162	FEMALE 60
TOTAL	216	222

SENTENCED INMATES

DISTRICT COURT	7
WEEKENDS	6
WAITING COURT	21

HIP
WORK RELEASE

****EMS**

Reporting on completion of CPR and first aid certification for jail staff, Joe Prewitt presented his regular report as follows:

08/17/2016

Monthly EMS Run Totals
As of July, 2016

Areas	Monthly Estimated Inmate	Monthly New Arrests	Monthly Discharges	Monthly Services	Services - Burial Costs	Monthly Average	Services - Burial Costs	Average
Bardstown Area	381	61	442	\$ 302,889.40	\$ 442	\$ 302,889.40	\$ 302,889.40	\$ 685.27
Bloomfield Area	24	8	32	\$ 20,590.60	\$ 32	\$ 20,590.60	\$ 20,590.60	\$ 643.46
New Haven Area	21	8	29	\$ 16,219.80	\$ 29	\$ 16,219.80	\$ 16,219.80	\$ 559.30
Boston Area	13	0	13	\$ 10,721.80	\$ 13	\$ 10,721.80	\$ 10,721.80	\$ 824.75
Cox's Creek Area	17	8	25	\$ 9,968.60	\$ 25	\$ 9,968.60	\$ 9,968.60	\$ 398.74
TOTAL	456	101	557	\$ 360,390.20	\$ 557	\$ 360,390.20	\$ 360,390.20	\$ 647.02
Average Per Day	14.7	3.3	18.0	\$ 11,625.49	\$ 18.0	\$ 11,625.49	\$ 11,625.49	
Collections (YTD)				\$	\$	\$	\$	153,736.00
Collection Per Run								283.07
Cost Per Run								387.67
Difference								(704.60)
RETURNS TO STATION I		16						
Previous Year 2015	Totals	586	698	\$ 363,325.90	\$ 363,325.90	\$ 363,325.90	\$ 363,325.90	
Previous Year Difference		-39	-39	(2,935.70)	\$	(2,935.70)	\$	
Previous Year 2014	Totals	545	645	\$ 302,980.35	\$ 302,980.35	\$ 302,980.35	\$ 302,980.35	
Previous Year Difference		12	12	57,409.85	\$	57,409.85	\$	
Previous Year 2013	Totals	550	650	\$ 321,738.00	\$ 321,738.00	\$ 321,738.00	\$ 321,738.00	
Previous Year Difference		7	7	38,652.20	\$	38,652.20	\$	
Previous Year 2012	Totals	527	527	\$ 312,024.60	\$ 312,024.60	\$ 312,024.60	\$ 312,024.60	
Previous Year Difference		30	30	48,365.60	\$	48,365.60	\$	
Previous Year 2011	Totals	560	560	\$ 325,985.50	\$ 325,985.50	\$ 325,985.50	\$ 325,985.50	
Previous Year Difference		7	7	34,394.70	\$	34,394.70	\$	

9 TREAT NO TRANSPORT

Fiscal Court Orders

Aug. 23, 2016
SPECIAL SESSION OF NELSON FISCAL COURT

Book 39
Page 67

****REC DEPARTMENT**

Memo presented outlining projects that need to be completed in the near future; memo was accompanied by pictures showing reason for proposed work at the recreation park, as well as cost estimate for trail resurfacing:

To: Dean Watts
From: Brad Spalding & Tyler Wimpsett
CC:
Date: August 22, 2016
Re: Dean Watts Park Projects

There are several projects that we need to consider completing at Dean Watts Park this fall season. The following is a brief description along with estimated cost of each. In addition, pictures of each have been included.

Project #1 Bricking of Backstop for Field #4. (Cost \$7,500)

Same project as we completed in spring of 2016 for Field #3.

Dave Cook completed the project on Field #3 and provided the cost estimate for Field #4.

Project #2 Re-grading infield area of Field #4 (Cost \$3,500)

Infield Continues to hold water. Interior of field is lower in elevation than exterior. Will use Road Department personnel to haul soil, re-grade. Superior Turf Sod Farm will supply and install new sod for infield.

Project #3 Resurfacing certain areas of walking trail (\$25,000)

Discussion was held defining needs at the Recreation Park and prioritizing those needs. Scheduling of some projects needs to be worked around the various ball seasons or coordinated with other work being done at a specific location; i.e., backstop work will be done while field is in disrepair due to working on water retention issues. On motion of Keith Metcalfe, second of Bernard Ice, by unanimous vote of the Court, IT IS HEREBY ORDERED to approve projects listed above.

SHERIFF'S VEHICLES



8/12/16

Nelson County Fiscal Court
1 Court Square
Bardstown, KY 40004

Dear Nelson County Fiscal Court

We are pleased to place a bid on the 2017 Ford Police Interceptors to your specifications.

(4) 2017 Ford Police Interceptor

Bid Price \$28,977.77

Price does not include in Kentucky sales or usage tax

Contact me at (502) 348-3929 if you should have any questions.

Sincerely,

Nicholas Heaton

Fiscal Court Orders

Aug. 23, 2016

Book 39
Page 68

SPECIAL SESSION OF NELSON FISCAL COURT

On motion of Keith Metcalfe, second of Jeff Lear, by unanimous vote of the Court, IT IS HEREBY ORDERED to approve the purchase of four (4) SUVs for the Nelson County Sheriff's Department; two vehicles will be charged to the county budget and two will be charged to the Sheriff's budget. Vehicles purchased will be 2017 Ford Police Interceptors as quoted by Conway-Heaton at \$28,977.77.

Nelson Fiscal Court will meet in special session at 9:00 a.m. in the Nelson Fiscal Court meeting room on Aug. 30.

On motion of Bernard Ice, second of Jerry Hahn, by unanimous vote of the Court, IT IS HEREBY ORDERED to adjourn the Aug. 23 special meeting of Nelson Fiscal Court.

DEAN WATTS, NELSON COUNTY JUDGE-EXECUTIVE

ELAINE A FILIATREAU, NELSON COUNTY CLERK

Fiscal Court Orders

Aug. 30, 2016
SPECIAL SESSION OF NELSON FISCAL COURT

Book 39
Page 69

COURT MET IN SPECIAL SESSION, PRESENT COUNTY JUDGE-EXECUTIVE DEAN WATTS AND THE FOLLOWING NAMED MAGISTRATES: KEITH METCALFE, BERNARD ICE, JEFF LEAR AND JERRY HAHN. MAGISTRATE SAM HUTCHINS WAS ABSENT.

Nelson Fiscal Court

Special Meeting Agenda

August 30, 2016

9:00 a.m.

1. Public Hearing on Proposed 2016 Tax Rates.
2. First Reading on Proposed Tax Rates.
3. Easement for Talbott Inn.
4. Dispatching Update:
 - A. Funding
 - B. City of Bardstown
 - C. Director
5. Proposed City Occupational Tax Increase.
6. Tax Moratorium Request: Domino Family Trust – 426 Sutherland Road, Bardstown, KY

PUBLIC HEARING – TAX RATES

County Judge-Executive Dean Watts called to order a public hearing for the purpose of hearing comments on the 2016 property tax rates, explaining the impact of rates as they have been proposed. Although tax on real property will remain the same as last year, there will be an estimated increase in revenue that is intended to be used for maintenance of the Civic Center and of the Old Courthouse. There has been no written comment received; no public comment was made at this hearing. Public hearing was closed.

ORDINANCE SETTING PROPERTY TAX RATES FOR NELSON COUNTY FOR 2016 (FIRST READING)

County Judge-Executive Dean Watts presented in open Court for first reading the following proposed ordinance related to property tax rates for Nelson County for 2016. Said proposed ordinance was read in open Court in resume form and a full copy of the proposed ordinance is as follows:

ORDINANCE RELATING TO THE SETTING OF PROPERTY TAX RATES TO FUND THE 2016-2017 BUDGET OF THE COUNTY OF NELSON

WHEREAS the County adopted a budget for the 2016-2017 fiscal year on May 17, 2016; and

WHEREAS property tax rates to fund the said budget could not be adopted prior to the County's receipt of the State Local Finance Officer's Certification of the Maximum Permissible Revenue from ad valorem taxes in accordance with KRS 68.245, which was received July 14, 2016; and

WHEREAS the said certification establishes compensating and maximum tax rates for the County;

NOW THEREFORE BE IT ORDERED BY THE FISCAL COURT OF THE COUNTY OF NELSON, KENTUCKY:

SECTION ONE: There is levied for the year 2016 the ad valorem tax rates per \$100.00 assessed valuation on all taxable property with the County for General Fund as indicated:

Fiscal Court Orders

Aug. 30, 2016

SPECIAL SESSION OF NELSON FISCAL COURT

Book 39
Page 70

PROPERTY	RATE	GROSS ESTIMATED REVENUE
Real Estate	14.30	\$ 3,619,407
Personal Property	14.30	225,050
Motor Vehicles	16.10	526,022
Franchise Co. R.E.	14.30	30,647
Franchise Co. Per.	14.30	90,567
Distilled Spirits	14.30	700,211
Water Craft	16.10	12,612
Bank Deposits	.025 on deposits	Varies
Aircraft	01.50	181

TOTAL ESTIMATED TAX REVENUE \$ 5,204,697

SECTION TWO: The said revenues shall be expended in accordance with the provisions of the budget adopted by the Fiscal Court of the County of Nelson on May 17, 2016.

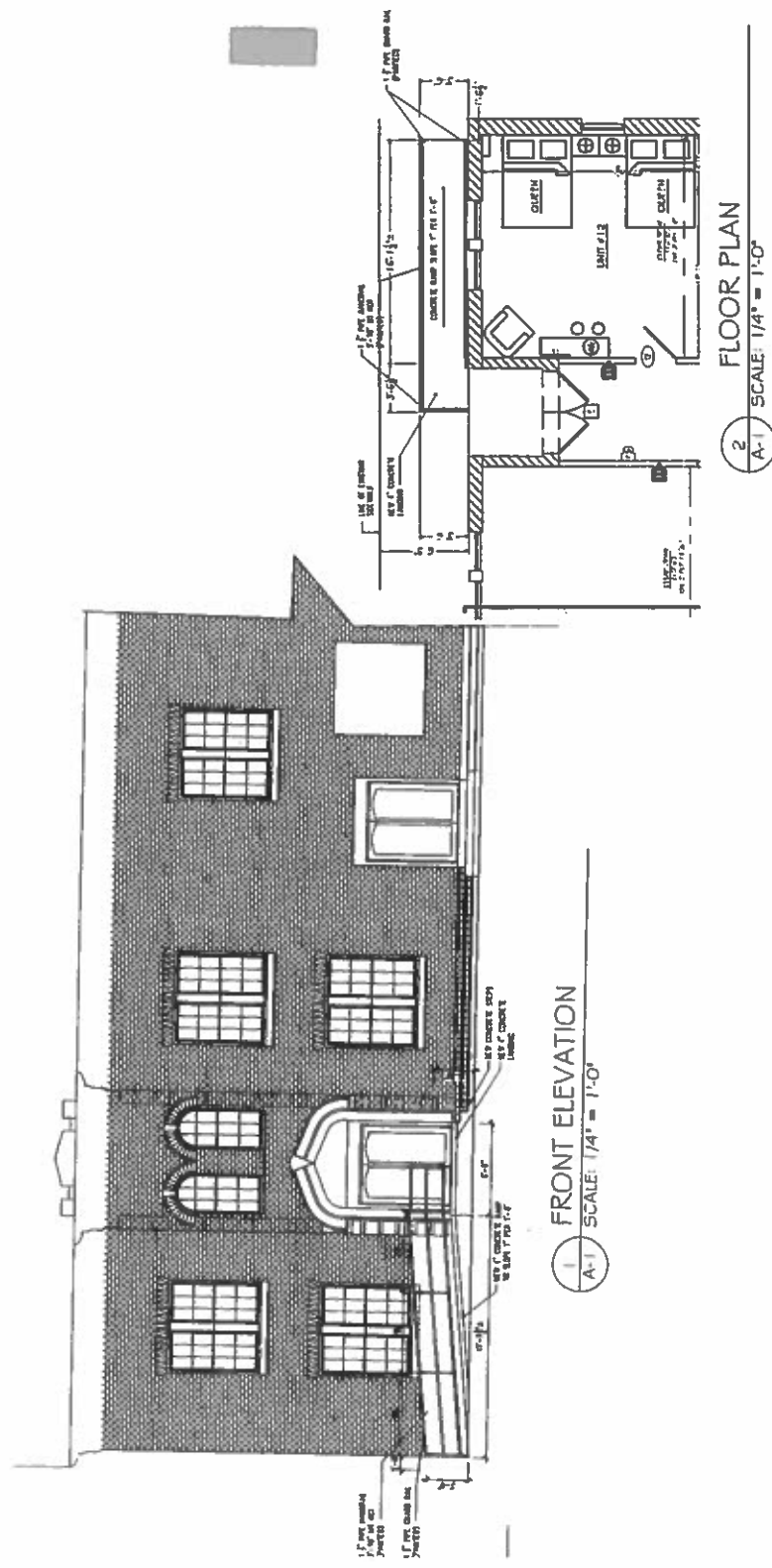
SECTION THREE: This Ordinance shall be published in The Kentucky Standard newspaper by title and summary within 30 days after adoption.

SECTION FOUR: This Ordinance becomes effective immediately upon passage and publication.

After a first reading, motion was made by Jeff Lear, second by Bernard Ice, by affirmative vote of Court members Lear, Ice, Metcalfe, and Hahn, IT IS HEREBY ORDERED that legal notice advertising the second reading and possible adoption of the proposed ordinance be published in The Kentucky Standard in accordance with KRS 424.

EASEMENT - TALBOTT INN

Renovation of a building (old Oakley Building) now known as Talbott Inn includes installation of an elevator; however, a ramp to the building entrance is required as a matter of accessibility. John Kelley, one of the owners, appeared before Nelson Fiscal Court requesting an easement for ramp placement, agreeing that the ramp will be made as short as possible while meeting elevation standards (shorter than pictured). On motion of Bernard Ice, second of Keith Metcalfe, and on affirmative vote of Court members Ice, Metcalfe, Lear and Hahn, IT IS HEREBY ORDERED to approve an easement for the Talbott Inn ramp and to authorize the County Judge-Executive to sign all related documents.



FLOOR PLAN
SCALE: 1/4" = 1'-0"

FRONT ELEVATION
SCALE: 1/4" = 1'-0"

Fiscal Court Orders

Aug. 30, 2016
SPECIAL SESSION OF NELSON FISCAL COURT

Book 39
Page 71

DISPATCH UPDATE

Judge Watts told Court members that the \$24 fee dedicated to E-911 dispatching will appear on this year's property tax bills. He introduced Milt Spalding as interim director of the Dispatch Board, noting that Nelson County's E-911 Dispatch Service will move forward with or without the participation of the City of Bardstown. Judge Watts expressed appreciation to the Dispatch Board and employees for their work and for their cohesiveness during difficult circumstances.

TAX MORATORIUM - DOMINO FAMILY TRUST

The following tax moratorium is approved on motion of Jeff Lear, second of Jerry Hahn, and by affirmative vote of all Court members present--Domino Family Trust:

NELSON COUNTY - KENTUCKY

APPLICATION FOR ASSESSMENT/REASSESSMENT MORATORIUM CERTIFICATE

Please read The 'Explanation of Assessment/Reassessment Moratorium Certificate' prior to completing this application - attached.

Name	DOMINO FAMILY TRUST BARDSTOWN			Phone	502.919.0334
Mailing Address	420 SUTHERLAND ROAD				
City	BARDSTOWN	State	KY	Zip	40004

OWNER INFORMATION

Type	<input checked="" type="checkbox"/> Commercial <input type="checkbox"/> Residential	Project Completion Date	APR 16 2017
Location /Address	420 SUTHERLAND ROAD BARDSTOWN, KY 40004		

PROPERTY INFORMATION

General Description of Property: IT SITS JUST INSIDE CITY BOUNDARY, 7.76 ACRES WITH TREE BARNS ORIGINALLY BUILT AS EVENT VENUES.

General Description of Proposed Use: WEST BUILDING/TAXI CAB ROOM AND VISITOR CENTER; CENTRAL BUILDING/CRAFT DISTILLERY; EAST BUILDING/TRANSITIONAL EVENT VENUE, STORAGE

If commercial, list the fixed building equipment and a statement of the economic advantages expected from the moratorium and construction employment:

CURRENTLY OTHER THAN THE STRUCTURES THEMSELVES AT A TAX MORATORIUM ON THE PROPERTY WILL ALLOW US TO INCREASE OUR WORK FORCE WITH JOBS WITH FAIR PAY AND PERMANENCE.

NO SIGNIFICANT FIXED EQUIPMENT

Applicant's estimated Total Costs of rehabilitation or repair	\$875,000	Applicant's estimate of fair cash value of property as of the date of this application	\$375,000
---	-----------	--	-----------

AFFIDAVIT AND OATH

I, Barbara Ickern, hereby swear (affirm) under penalty of perjury that I (we) am (are) the owner(s) of the property for which this assessment moratorium is sought and that all information contained in this application is true and correct.

Signature of Applicant(s) Barbara Ickern Date 8.26.16

OFFICIAL USE ONLY DO NOT WRITE BELOW THIS LINE

PROPERTY VALUATION ADMINISTRATOR

Property Valuation Administrator's Appraisal	\$ 605,215
This Application is	<input checked="" type="checkbox"/> APPROVED <input type="checkbox"/> DISAPPROVED

Signature of Property Valuation Administrator Barbara Ickern Date 8/26/16

Fiscal Court Orders

Aug. 30, 3016

SPECIAL SESSION OF NELSON FISCAL COURT

Book 39
Page 72

PROPOSED CITY OCCUPATIONAL TAX

Judge Watts presented figures showing potential impact of the City's proposed increase in occupational tax, noting that over 50% of families in the county are single-parent families. Using a \$20 an hour job, and showing income necessary to meet all tax deductions and estimated life expenses, another \$200 from income is significant. City Council was asked to reconsider the increase that is being proposed for their occupational tax, especially in deference to those working people who struggle to make ends meet.

Magistrate Bernard Ice brought up the recent meeting held to address dispatch, stating that the Court was under the impression that there was agreement; he noted the waste of time incurred and disappointment with the message that was taken back to Bardstown City Council.

Special meeting of Nelson Fiscal Court will be held at 9:00 a.m. on Sept. 13. On motion of Bernard Ice, second of Jeff Lear, by affirmative vote of all Court members present, IT IS HEREBY ORDERED to adjourn the Aug. 30 meeting of Nelson Fiscal Court.

DEAN WATTS, NELSON COUNTY JUDGE-EXECUTIVE

ELAINE A FILIATREAU, NELSON COUNTY CLERK